

DODDS STREET LINEAR PARK

Project update, September 2023

City of Melbourne's works on the Dodds Street Linear Park are progressing well. The project is taking exciting steps forward to improve this under-explored part of the city.

What's been happening?

Paving at the Southbank Boulevard end of the street is well underway. The team has been preparing for paving on the eastern footpath, preparing tree pits, digging, excavating and remediating soil.

What's coming up?

- Laying a concrete base
- Installing below-ground services
- Paving
- Installing light pole footings
- Preparing for mounded gardens

Traffic changes

Dodds Street is closed to public vehicles. From late October 2023, vehicles will be able to return to the shared zone of Dodds Street which runs from the Southbank Boulevard to the service lane next door to the Melbourne Theatre Company. Vehicles will then be able to utilise pick-up/drop off bays and accessible parking bays.

Work hours

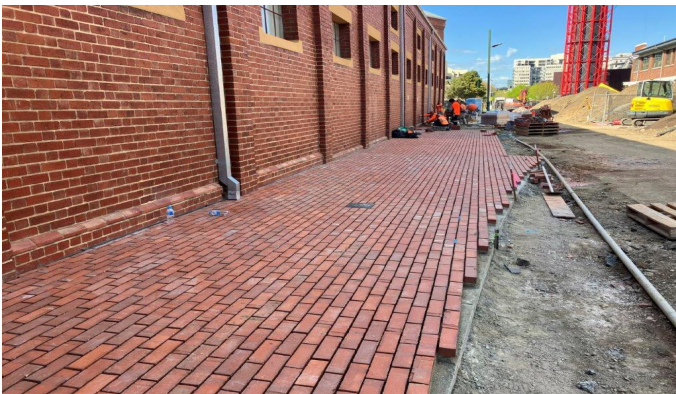
Works will continue to take place between 7am and 6pm Monday to Friday, and 8am to 3pm on Saturdays (as required).

Pedestrian access

Pedestrian access to all properties in Dodds Street will be maintained throughout the works. Bike and scooter riders must dismount to ensure Dodds Street remains safe for everyone.

Contact us

For more information about this project, please call 9658 9658 or visit melbourne.vic.gov.au/cityprojects



Paving works



Paving works



Interpreter services

We cater for people of all backgrounds
Please call 03 9280 0726